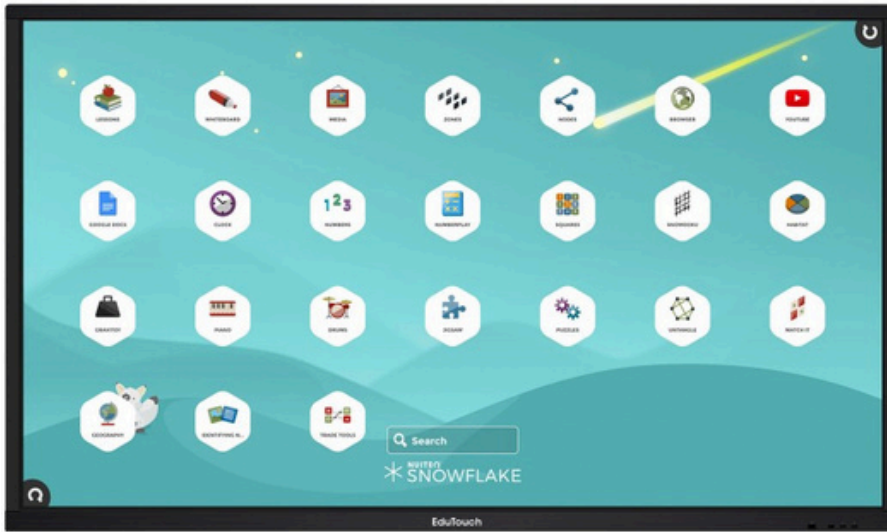


EDUTOUCH INTERACTIVE 4K DISPLAY



*Frame colour may vary.

EduTouch Interactive Panel

Classroom Solution

Features:

- 4K Ultra high-definition display
- Integrated Android interface with touch control
- Note for Android whiteboard functionality
- Web browsing
- 20 Point touch
- UHD resolution (3840 x 2160)
- Optional OPS Module
- Toughened glass (Mohs Scale Level 7)
- Anti-Glare glass
- **7 Year on site warranty**
- Windows and macOS compatible
- Dual-Band WiFi with Hotspot and Bluetooth



Create an interactive and collaborative learning environment within the classroom with our EduTouch Solutions, specifically designed for education!

We specialise in interactive LED technology and offer varying screen sizes including, **65", 75", 86" & 98"** options.

Wall mount or mobile trolley options are available to suit your classroom, library, school hall, meeting room or staff room.

Ongoing staff training & support is provided to enable teachers to use the panel to its full potential, engaging in all of the software and content available.

This brings greater support and engagement to the classroom when delivering to your students.

All our EduTouch Panels come standard with:

A Bundle of FREE Educational Software with the Purchase of any EduTouch Interactive Display. Included Software:



Readme Software & Training
Single User 12 Month Subscription

+

EduTouch Panel & Software Training - FREE & ONGOING FOR YOUR SCHOOL

+



Bytello Share

Bytello Share allows for **wireless display and touch control with Mac and Windows** and wireless display from Android and iOS devices (Airplay),



Optional PC Module

Intel Core i5	Dual-Band
8GB DDR4	Wi-Fi 2.4/5GHz
256GB SSD	Microsoft
Bluetooth 4.0 (2.4GHz)	Windows 10

Upgradable to: Intel Core i7, DDR4 16GB, 512GB SSD

EDUTOUCH INTERACTIVE 4K DISPLAY

65" EduTouch Display

Tech Specs:

- Screen Type: DLED
- Integrated Android Interface with 20 Point Touch Control
- Resolution: 3840 x 2160
- Brightness: 350 cd/m2
- Contrast: 1200:1
- Response Time: 8ms
- Number of Colours: 1.07B (10bit)
- Refresh Rate: 60Hz
- Viewing Angle: 178°
- 20 Point Touch
- Net weight 42Kg
- Built in speakers
- CPU: Quad Core A55
- VESA: 600 x 400mm
- Dimensions 1488mm x 906mm x 87mm

75" EduTouch Display

Tech Specs:

- Screen Type: DLED
- Integrated Android Interface with 20 Point Touch Control
- Resolution: 3840 x 2160
- Brightness: 350 cd/m2
- Contrast: 1200:1
- Response Time: 8ms
- Number of Colours: 1.07B (10bit)
- Refresh Rate: 60Hz
- Viewing Angle: 178°
- 20 Point Touch
- Net weight 55Kg
- Built in speakers
- CPU: Quad Core A55
- VESA: 800 x 400mm
- Dimensions 1709mm x 1029mm x 88mm

86" EduTouch Display

Tech Specs:

- Screen Type: DLED
- Integrated Android Interface with 20 Point Touch Control
- Resolution: 3840 x 2160
- Brightness: 350 cd/m2
- Contrast: 1200:1
- Response Time: 8ms
- Number of Colours: 1.07B (10bit)
- Refresh Rate: 60Hz
- Viewing Angle: 178°
- 20 Point Touch
- Net weight 69Kg
- Built in speakers
- CPU: Quad Core A55
- VESA: 800 x 600mm
- Dimensions 1957mm x 1169mm x 88mm

98" EduTouch Display

Tech Specs:

- Screen Type: DLED
- Integrated Android Interface with 20 Point Touch Control
- Resolution: 3840 x 2160
- Brightness: 350 cd/m2
- Contrast: 1200:1
- Response Time: 8ms
- Number of Colours: 1.07B (10bit)
- Refresh Rate: 60Hz
- Viewing Angle: 178°
- 20 Point Touch
- Net weight 104Kg
- Built in speakers
- CPU: A73 x4
- VESA: 600 x 600mm
- Dimensions 2245mm x 1323mm x 90mm

ANDROID SYSTEM

Android 11.0

4GB RAM, 32GB ROM, Bluetooth, Wifi, 2 x 16W Speakers

SUPPORTED SYSTEMS

Windows / Android / Linux/ macOS / Chrome

PORTS AVAILABLE

3 x HDMI in, VGA In, 1 x USB 2.0, 4 x USB 3.0, 2 x Touch USB, 1 x USB-C, Audio In, Audio Out, HDMI Out, Serial RS232, 2x LAN (RJ45), Digital Audio Out

EDUTOUCH INTERACTIVE 4K DISPLAY

MOBILE SOLUTIONS

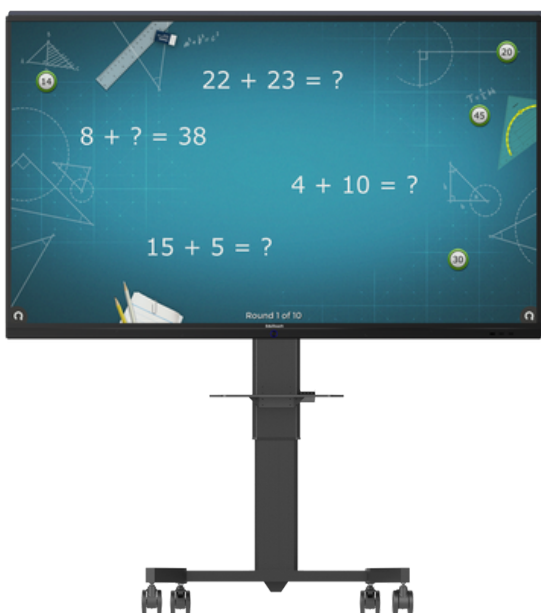


NB-CF100 Height Adjustable Mobile Stand

- Compatible with 60-100" Displays
- Height Adjustment
- Flexible Storage
- Includes Height-adjustable AV Shelf and Camera Tray
- All metal design, simple and durable

EST04 Automated Floor/Wall Mounted Stand

- Compatible with the EduTouch 55" - 98" Interactive Panels
- Flexible Height Adjustment
- Fixed on Wall
- Stable and safe
- All metal design, simple and durable



EST05 Electronic Height Adjustable Mobile Solution

- Stable and Safe – Special supporting structure design makes the EST05 Height Adjustable Mobile Solution compatible with the EduTouch 55"- 86" Interactive Panels.
- Electronic Height Adjustment.
- Easy to move with 360 degree omni-directional wheels.
- Flexible Storage with a removable Tray.
- Superior Metal Appearance – All metal design, simple and durable.

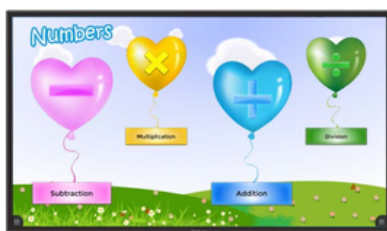


NUI TEQ Chorus transforms the classroom into an interactive learning environment.



Chorus is a fun educational suite of interactive multitouch applications designed to help kids learn while they play! Chorus is the only educational technology software allowing you to divide your touchscreen into independent, personalised zones. Chorus transforms the classroom into a fun, motivating, and engaging active learning environment.

Chorus enables teachers and students to tell engaging, interactive stories that align closely with the curriculum, it provides a safe community for online and small group collaboration, and it allows simultaneous personalised instruction making curriculum relevant to students' lives.



SAVE LESSON PLANNING TIME

DO MORE WITH EVERY TOUCH

VIDEO LINKED LESSONS

FUN CONTENT

A SAFE PLACE TO SHARE

HIGHLIGHT STUDENT WORK

BLENDED/FLIPPED

Activities during class

PROJECT-BASED LEARNING

Create an adventure with Lesson Lists

TEACHER PROFESSIONAL DEVELOPMENT

With online courses and videos

LEARNING STATIONS

For small groups in upright and tabletop settings

MULTIPLE MEANS OF PRESENTATION

Keep slides, websites, videos, and activities always visible

STANDARDS ALIGNMENT

Lessons made for Teachers by Teachers

STUDENT VOICE

Less typing, more formative feedback

CONCEPT MAPPING

Organize relevant content in Nodes

PROBLEM-BASED LEARNING

Supports truly independent inquiry in Zones

DIGITAL CURATION

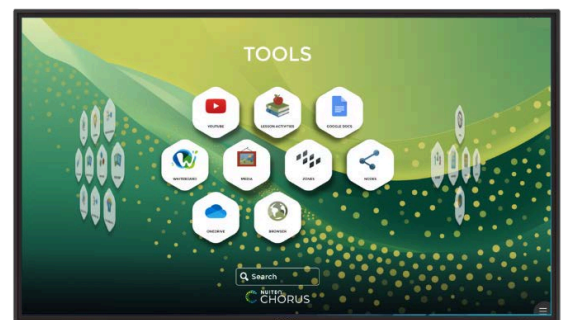
By teachers and students

STEAM LABS, MAKER SPACES

With active content and mobile creation

ACCESSIBILITY

Guided access, voice recording, dyslexia friendly font, and color overlays. 40+ supported languages, including English, Spanish, Arabic, Chinese, and more.



Comes with 30+ apps with pre-loaded and customisable content.

For teachers, Chorus also means spending less time preparing and more time working with students.

SAVE LESSON PLANNING TIME

Teachers can find standards-aligned Chorus Lessons created by teachers for teachers that they can edit to suit their needs.

DO MORE WITH EVERY TOUCH

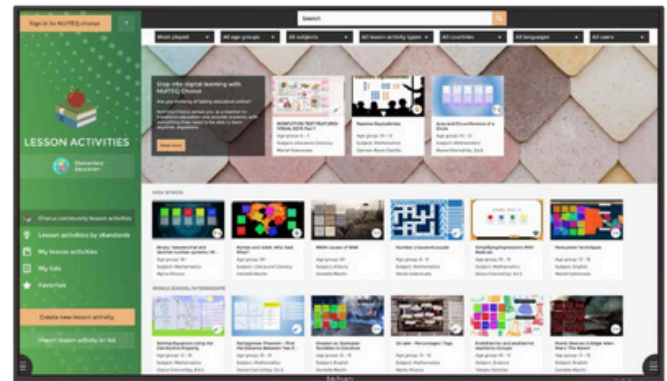
Smarter Human Interaction means doing more with every touch, and it means minimising the effort of every student to be active learners. Save your preferred custom Zones layouts so you can have an entire collaboration station with one single tap. Load a lesson playlist or webpage directly from your home screen.

AI-POWERED TECHNOLOGY

Teachers are empowered with the award-winning AI assistant, designed to supplement their expertise and supercharge the creation of engaging lesson activities.

VIDEO LINKED LESSONS

More and more teachers are using videos to boost student engagement in the classroom. With Chorus, you have access to video-linked lessons that provide hands-on activities aligned with educational standards. These lessons are made by teachers for teachers: by the members of NUITEQ's Global Content Department, but also by teachers all over the world who use Chorus in their classroom. Play the lessons online, on your PC, Chromebook, laptop, or other mobile device or in tabletop mode on a large interactive display.



We believe that Making Education Fun means listening to students and how they want to learn. The student's voice enables authentic dialog and deep reflection but we need Smarter Human Interaction to ensure that more class time is spent on reflecting and active learning.

FUN CONTENT:

Transform quality videos from trusted sources into learning activities and provide multiple ways to learn the material (e.g. Wikipedia, Podcasts) so that every student can succeed.

A SAFE PLACE TO SHARE:

When you answer multiple choice, true/false, and even open-ended questions in a Chorus Poll, students can be anonymous and grades are hidden. Students can share their feelings with emojis and bad words in English and Spanish are filtered out.

DRAFTING AND DESIGN:

Chorus allows multiple students to work simultaneously on the same display with different apps. Capture your personal zone and use it as a collage for markup and presentation.

CREATION ON MOBILE:

Mobile creation is the key to creative self-expression in the classroom. That's why we've made it possible to play every activity and with the online version of Chorus (accessible at Chorus.nuiteq.com). Use images from your camera roll, and record your voice for use inside your lesson.

Read Me!
 Designed and produced by practising teachers

ReadMe™ is a literacy tool designed and produced by practising English Teachers!

ReadMe™ is a literacy tool that can be effectively used by all teachers. The idea for ReadMe™ evolved through years of experience, teaching English literacy classes in upper Primary to lower Secondary.

- Bringing together advanced teaching techniques and modern technology, the lessons capture students attention.
- Comprehensive programme of 27 lessons that cover basic grammar skills, poetry analysis and text types.
- ReadMe™ suits a wide audience. As the lesson content is drawn from subjects across the curriculum, diversity and wide appeal is guaranteed.
- Students who are reluctant readers do not always engage with lessons presented in the “chalk & talk” manner; ReadMe™ offers an alternative.

Australian Curriculum aligned

Comprehensive Literacy teaching tool

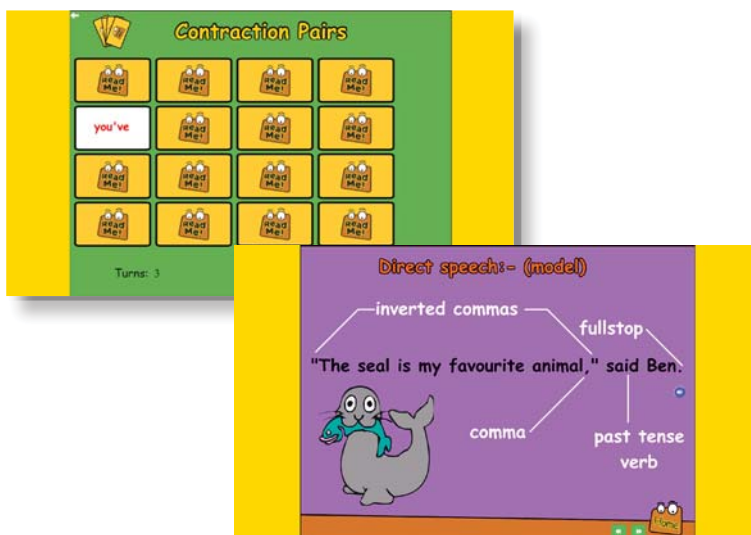
Online platform independent

Available 24/7

Includes printable BLM's (Blackline Masters)

27 literacy lessons

- | | |
|--------------------------------|---------------------------------|
| 1. Nouns & Adjectives | 15. Main Idea of a Paragraph |
| 2. Verbs & Adverbs | 16. Overused Adjectives & Verbs |
| 3. Tense | 17. Cause & Effect |
| 4. Punctuation | 18. Fact & Opinion |
| 5. Plurals & Possessives | 19. Persuasive Language |
| 6. Contractions | 20. Overview of Genres |
| 7. Conjunctions & Prepositions | 21. Narrative |
| 8. Direct & Indirect Speech | 22. Recount |
| 9. Syllables | 23. Information Report |
| 10. Similes & Metaphors | 24. Procedure |
| 11. Personification | 25. Explanation |
| 12. Onomatopœia & Alliteration | 26. Exposition |
| 13. Synonyms & Antonyms | 27. Discussion |
| 14. Sequencing | |





Note Interactive Software enhances traditional teaching.

Key Features:

- Touchscreen based interactive whiteboard software.
- Whiteboard functions: writing, erasing, commenting, drawing and roaming.
- Interactive Multimedia Function; subject-specific tools and multimedia demonstration.
- Group note taking.
- Create engaging interactive animations for lesson content.
- Create multiple pages, save and have a digital record of the days learning (Build a database of lessons).
- Import and export worksheets.
- Engage students in writing and drawing shapes.
- Display and use clock, calendar and calculators in one easy platform.
- Import, analyse and evaluate videos.

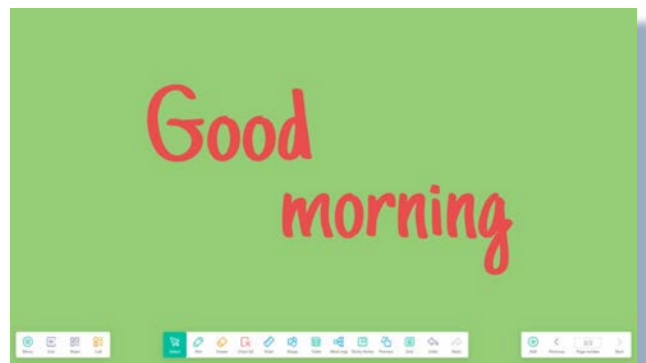
Build a database of lessons

Import and export worksheets

Engage students

Create interactive lessons

Whiteboard functionality with SmartWrite.



Multiple background options, different colour pens and highlighters for easy annotation.



Mind map tool.

